

**14-1.6  
APPART.  
1 CH.**

**SEJOUR  
S: 27,64 m<sup>2</sup>**

**CHAMBRE 1  
S: 10,83 m<sup>2</sup>**

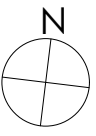
PROJECT : GDLA 2  
Commercial Plan



BOULEVARD DE LA WOLUWE/WOLUWELAAN, 46/11  
1200 BRUXELLES / BRUSSEL  
Tel : +32 740 14 50

Date : 10/03/2022

Location :  
Rue de la Monnaie, 14  
5000 Namur



**+1**

Furniture is fictional and for illustrative purposes only.  
The dimensions and configurations of the apartments are given for information only.