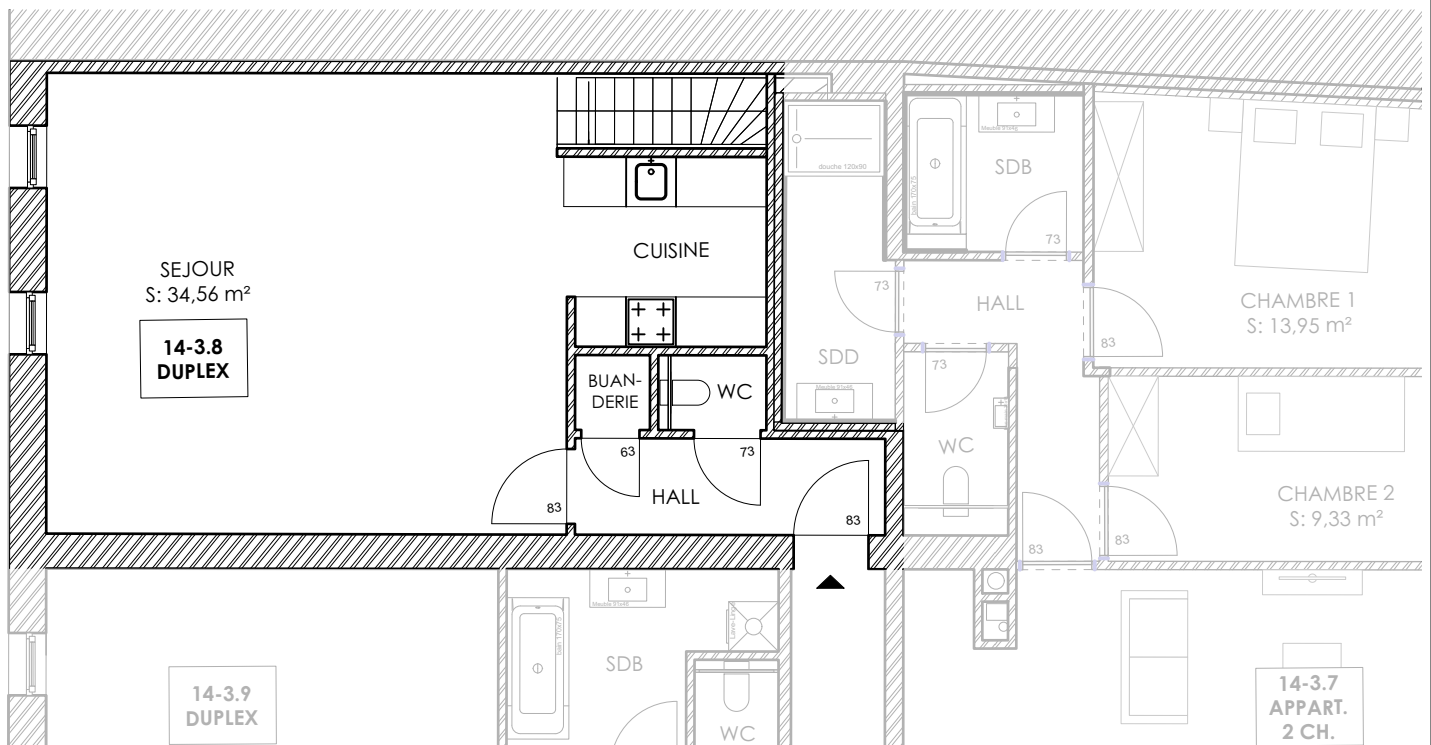
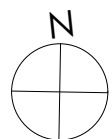
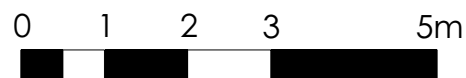


Plan du 4ème étage



Plan du 3ème étage



PROJECT : GDLA 2  
Commercial Plan



Date : 10/03/2022

Location :

Rue de la Monnaie, 14  
5000 Namur

**+3/+4**

Furniture is fictional and for illustrative purposes only.  
The dimensions and configurations of the apartments are given for information only.

BOULEVARD DE LA WOLUWE/WOLUWELAAN, 46/11  
1200 BRUXELLES / BRUSSEL  
Tel : +32 740 14 50