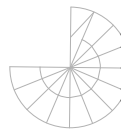
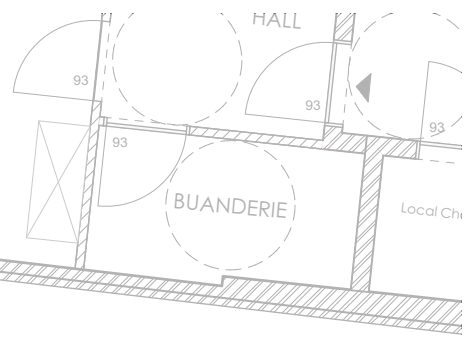


14-1.11  
APPART. PMR  
1 CH.

SEJOUR  
S: 25,48 m<sup>2</sup>



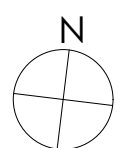
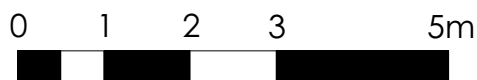
SEJOUR  
S: 32,95 m<sup>2</sup>

14-1.1  
APPART.  
2 CH.



CHAMBRE 1  
S: 18,80 m<sup>2</sup>

CHAMBRE 2  
S: 10,06 m<sup>2</sup>



PROJECT : GDLA 2  
Commercial Plan



Date : 10/03/2022

Location :

Rue de la Monnaie, 14  
5000 Namur

+1

Furniture is fictional and for illustrative purposes only.  
The dimensions and configurations of the apartments are given for information only.

BOULEVARD DE LA WOLLUWE/WOLUWELAAN, 46/11  
1200 BRUXELLES / BRUSSEL  
Tel : +32 740 14 50